



LITTER BINS

METAL | CONCRETE | WOODEN

PO Box 128619 Abu Dhabi UAE | Tel +971 2 650 8039 | Fax +971 2 673 5995

Email moderngardens@gmail.com | marketing.moderngardens@gmail.com | Website moderngardensuae.com



LITTER BINS | METAL





COMETA LITTER BIN

SPECIFICATIONS |
GALVANIZED AND POWDER
COATED, SCREWS ARE STAINLESS
STEEL,
450mm x 290mm x 1000mm



GIOVE LITTER BIN

SPECIFICATIONS |
GALVANIZED AND POWDER
COATED, SCREWS ARE STAINLESS
STEEL, AVAILABE IN DIFFERENT
RAL COLORS
580mm x 580mm x 1140mm

LITTER BINS

METAL





SATURNO LITTER BIN

SPECIFICATIONS | ELLIPTIC
SHAPE, STEEL SHEET 5mm
GUARANTEED STABILITY,
OPENABLE DOOR,
REMOVABLE ASHTRAY, STAINLESS
STEEL SCREWS, IN DIFF. RAL
COLOURS
580mm x 352mm x 925mm



OLBIA LITTER BIN

SPECIFICATIONS |
GALVANIZED AND POWDER
COATED, SCREWS ARE STAINLESS
STEEL, AVAILABE IN DIFFERENT
RAL COLORS
550mm x 350mm x 955mm

LITTER BINS

METAL





CORONA SMOG LITTER BIN

MATERIALS | GALVANIZED AND POWDER COATED, IN DIFFERENT RAL COLOURS
Ø 570mm x 1145mm

LITTER BINS

METAL

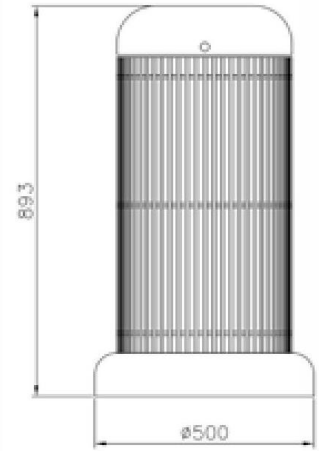




APOLLO



ULISSE



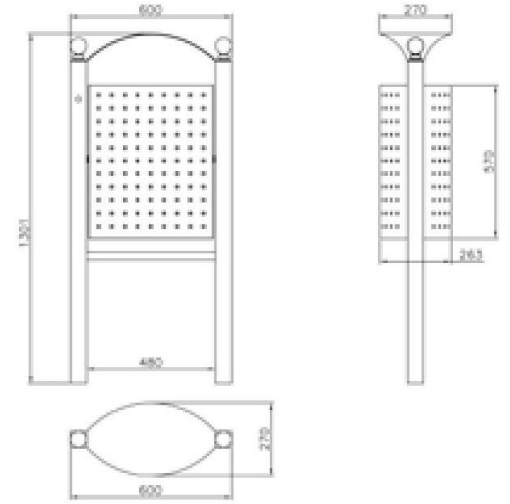
APOLLO AND ULISSE LITTER BIN

SPECIFICATIONS | CYLINDRICAL BODY FORMED FROM 60 WELDED Ø 8mm STEEL RODS, GALVANIZED AND POWDER COATED, SCREWS ARE STAINLESS STEEL
Dia293x 500mm, Dia215 Opening

LITTER BINS

METAL





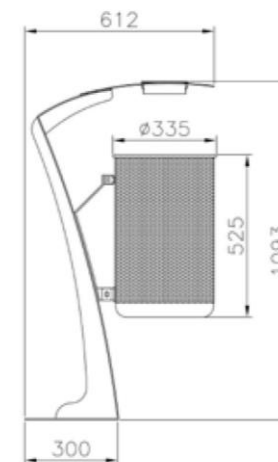
GENOVA LITTER BIN

SPECIFICATIONS | ELLIPTIC CONTAINER IN PERFORATE STEEL SHEET THICK 10-12, METAL PARTS IN GALVANIZED AND POWDER COATED, SCREWS ARE STAINLESS STEEL, AVAILABE IN DIFFERENT RAL COLORS
600mm x 270mm x 1080mm

LITTER BINS

METAL





BASKET AND CORTINA LITTER BIN

SPECIFICATIONS | ELLIPTIC SHAPED CONTAINER Ø335mm IN PERFORATED STEEL SHEET THICKNESS 20/10, IN GALVANIZED AND POWDER COATED, AVAILABE IN DIFFERENT RAL COLORS
612mm x 1093mm, BIN Ø 335mm

LITTER BINS

METAL



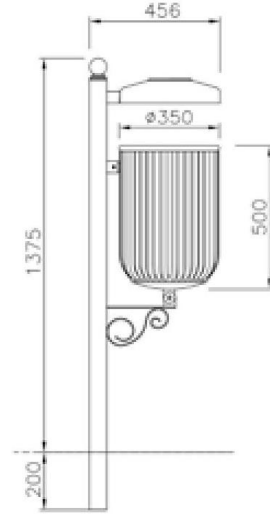
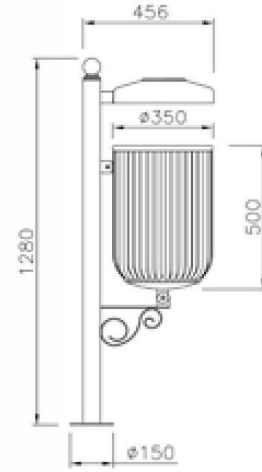


SASSARI



SASTY

1280



SASSARI AND SASTY LITTER BIN

SPECIFICATIONS | CYLINDRICAL CONTAINER Ø350mm, "CAGE" OF 37 VERTICAL TUBES Ø16mm, IN GALVANIZED AND POWDER COATED, AVAILABLE IN DIFFERENT RAL COLORS
456mm x 1280mm, BIN Ø 350mm

LITTER BINS

METAL





LUNA LITTER BIN

**SPECIFICATIONS | CYLINDRICAL CONTAINER
Ø320mm, IN PRE-GALVANIZED STEEL SHEET THICKNESS
10/10, BOTTOM PART HAS HOLE TO FACILITATE
DRAINAGE, POWDER COATED, STAINLESS STEEL SCREWS,
AVAILABLE IN DIFFERENT RAL COLORS
425mm x 1030mm, BIN Ø 350mm**

LITTER BINS | METAL

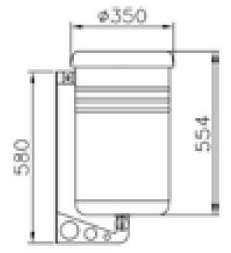
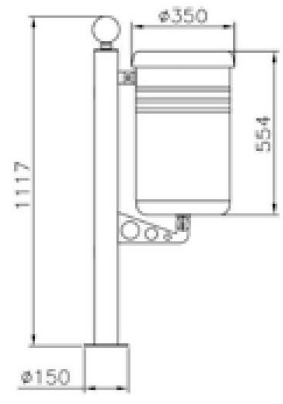
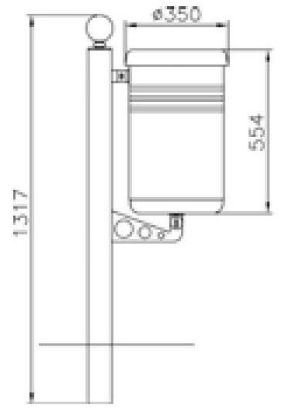




**SIENA
EVOLUTION**



PALIO



SIENA EVOLUTION AND PALIO LITTER BIN

SPECIFICATIONS | CYLINDRICAL CONTAINER Ø320mm, STEEL SHEET THK.10/10 COMPLETE ON THE UPPER PART OF AN OPENABLE RING, IN GALVANIZED AND POWDER COATED, AVAILABLE IN DIFFERENT RAL COLORS
STAND H. 1117mm, BIN Ø 350mm H. 554mm

LITTER BINS | METAL





WALL FIXING

MILANO LITTER BIN

SPECIFICATIONS | GALVANIZED AND
POLYESTER POWDER COATED IN DIFFERENT
RAL COLOURS
367mm x 1200mm Bin Ø 307mm



WALL FIXING

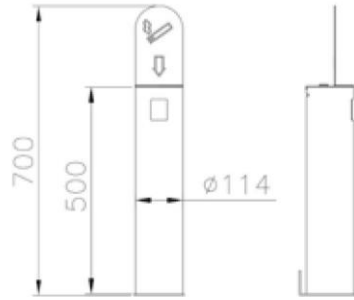
PISA LITTER BIN

SPECIFICATIONS | GALVANIZED AND
POWDER COATED IN DIFF. RAL 367mm x
1200mm Bin Ø 320mm

LITTER BINS

METAL





WALL FIXING



CITY LITTER BIN

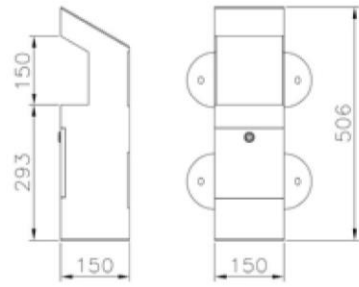
SPECIFICATIONS | ASHTRAY MADE UP ENTIRELY IN STAINLESS STEEL OR IN GALVANIZED AND POWDER STEEL IN DIFFERENT RAL COLOURS. COVER WITH THE LOGO OF THE CIGARETTE IS EASY TO CLEAN AND CAN BE REMOVED WITH THE OPENING OF THE UNIVERSAL LOCK ON THE BACK OF THE CAP TO ALLOW THE EXTRACTION OF THE INNER CONTAINER.

BIN Ø114mm H. 1302mm

LITTER BINS

METAL





WALL FIXING



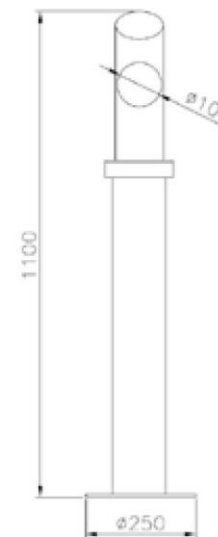
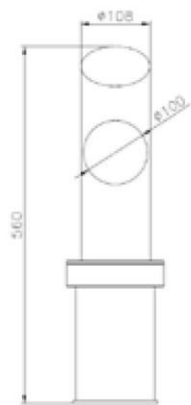
DRIVE IN ASHTRAY

SPECIFICATIONS | ASHTRAY MADE UP OF A STEEL STRUCTURE SQUARE SHAPED, INCLUDES A PERFORATED STEEL SHEET THAT ACT AS FLOOR TO EXTINGUISH CIGARETTES, IN STAINLESS STEEL OR IN GALVANIZED AND POWDER STEEL IN DIFFERENT RAL COLOURS
150mm x 150mm H. 1211mm

LITTER BINS

METAL





SMOG ASHTRAY

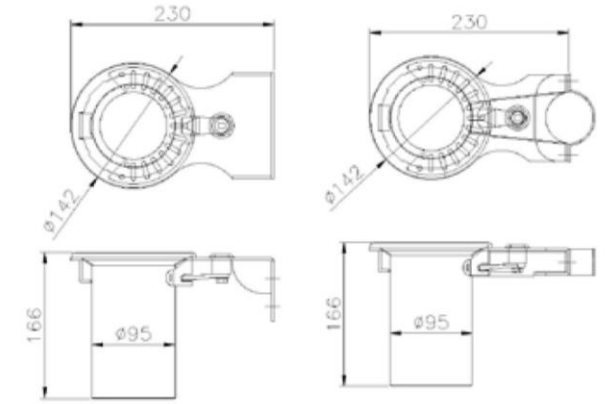
SPECIFICATIONS

ASHTRAY MADE UP ENTIRELY IN STAINLESS STEEL OR IN GALVANIZED AND POWDER STEEL IN DIFFERENT RAL COLOURS, IN THE UPPER PART IS A HOLE TO LAY CIGARETTES AND A PLATINE TO TURN THEM OFF, THE TOP IS REMOVABLE AND IS RELEASED BY A SPECIAL LOCK WITH KEY SYSTEM FOR THE EMPTYING OF CIGARETTE BUTTS AND ASH
BIN Ø 108mm H. 1100mm

LITTER BINS

METAL





DELFO ASHTRAY

SPECIFICATIONS | **MADE IN GALVANIZED AND POWDER COATED STEEL IN DIFFERENT RAL COLOUR. PREDISPOSED FOR THE FIXING ON A TUBULAR D. 55-60mm BY STIRRUPS, WALL MOUNTED ALSO AVAILABLE. A LOCK WITH UNIVERSAL KEY ALLOWS THE EMPTYING OF THE ASHTRAY.**

LITTER BINS

METAL



SEPARATE WASTE COLLECTION
COLOURS ACCORDING TO UNI EN 840-1:2013



GENESI LITTER BIN



SECTOR LITTER BIN

RECYCLING LITTER BINS

SPECIFICATIONS | ELLIPTICAL SHAPE FOR SEPARATE COLLECTION OF 4 TYPES OF WASTE. SUPPLIED WITH RINGS FOR THE SACK. THE OPENING LID IS CLOSED BY A LOCK WITH UNIVERSAL SQUARE KEY. ALL THE METAL PARTS, EXCEPT THOSE IN STAINLESS STEEL, ARE PROTECTED BY CATAPHORESIS OR GALVANIZING AND THEN COATED WITH POLYESTER POWDER PAINTS. STAINLESS STEEL PARTS ARE FINISHED WITH POLISHED FINISHED SURFACE.

LITTER BINS

METAL



SEPARATE WASTE COLLECTION
COLOURS ACCORDING TO UNI EN 840-1:2013



FLY 4 SETTORI LITTER BIN

SPECIFICATIONS | SEPARATE WASTE COLLECTION IDEAL FOR LARGE STRUCTURES LIKE AIRPORTS, SHOPPING CENTERS, ETC.
CYLINDRICAL SHAPE STRUCTURE IN PERFORATED STEEL SHEET THICK 2mm AND BOTTOM PART IN STEEL SHEET THK. 3mm THAT RESTS ON GROUND BASE D. 540mm. GALVANIZED AND POWDER COATED STEEL. COVER IS LIQUID COATED IN DIFF. COLOURS.

LITTER BINS

METAL





FLY 4 SETTORI

MATERIALS

GALVANIZED AND LIQUID COATED STEEL, IN
DIFFERENT RAL COLOURS

Ø 594mm x 735mm

LITTER BINS

METAL



SEPARATE WASTE COLLECTION
COLOURS ACCORDING TO UNI EN 840-1:2013



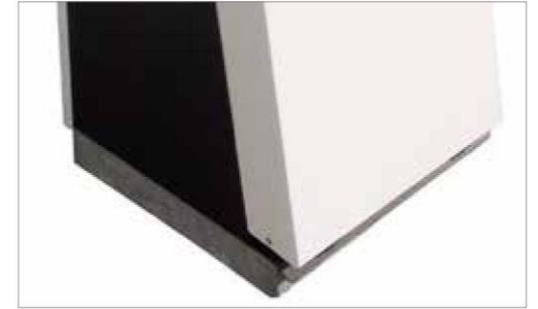
FLY 3 SETTORI LITTER BIN

SPECIFICATIONS | SEPARATE WASTE COLLECTION IDEAL FOR LARGE STRUCTURES LIKE AIRPORTS, SHOPPING CENTERS, ETC.
CYLINDRICAL SHAPE STRUCTURE IN PERFORATED STEEL SHEET THICK 2mm AND BOTTOM PART IN STEEL SHEET THK. 3mm THAT RESTS ON GROUND BASE D. 540mm. GALVANIZED AND POWDER COATED STEEL.
COVER IS LIQUID COATED IN DIFF. COLOURS.

LITTER BINS

METAL





SALUS LITTER BIN

SPECIFICATIONS | LITTER BIN FOR HAZARDOUS MATERIALS LIKE EXPIRED MEDICINES, BATTERIES, AND EMPTY SPRAY CANS. FIXED AT THE GROUND WITH BOLTS. STEEL SHEET LASER-CUT AND REINFORCED BY A TUBULAR FRAMEWORK. ALL METAL PARTS ARE GALVANIZED AND POWDER COATED IN DIFFERENT RAL COLOUR AND ALL SCREWS ARE IN STAINLESS STEEL.

LITTER BINS

METAL





LITTER BINS |



AP. 5301

DIMENSIONS | 300 x 520 x 1030mm



AP. 5302

DIMENSIONS | 530 x 530 x 1030mm



AP. 5303

DIMENSIONS | 530 x 530 x 1030mm

SPECIFICATIONS

METAL TYPE | PIPE PROFILE METAL PAINT | ELECTROSTATIC PAINT

LITTER BINS | METAL





AP. 5304

DIMENSIONS | 530 x 530 x 1030mm



AP. 5502

DIMENSIONS | 1120 x 400 x 700mm



AP. 5303

DIMENSIONS | 530 x 530 x 1030mm

SPECIFICATIONS

METAL TYPE | PIPE PROFILE & BOX PROFILE METAL PAINT | ELECTROSTATIC PAINT

LITTER BINS | METAL





AP. 5306

DIMENSIONS | 530 x 530 x 1030mm



AP. 5309

DIMENSIONS | 530 x 530 x 1030mm



AP. 5310

DIMENSIONS | 530 x 530 x 1030mm

SPECIFICATIONS

METAL TYPE | PIPE PROFILE & BOX PROFILE | METAL PAINT | ELECTROSTATIC PAINT

LITTER BINS | METAL





AP. 5312

DIMENSIONS | 800 x 800 x 750mm



AP. 5352

DIMENSIONS | 600 x 600 x 750mm



AP. 5351

DIMENSIONS | 520 x 520 x 780mm

SPECIFICATIONS

METAL TYPE | PIPE PROFILE & BOX PROFILE

METAL PAINT | ELECTROSTATIC PAINT

WOOD TYPE | CLASS IMPORTED YELLOW PINE

LITTER BINS | METAL





AP. 5354

DIMENSIONS | 450 x 450 x 620mm



AP. 5355

DIMENSIONS | 450 x 450 x 620mm



AP. 5356

DIMENSIONS | 400 x 400 x 600mm

SPECIFICATIONS

METAL TYPE | **BOX PROFILE** METAL PAINT | **ELECTROSTATIC PAINT** WOOD TYPE | **CLASS IMPORTED YELLOW PINE** WOOD PAINT | **VACUUM IMPREGNATION**

LITTER BINS | **METAL**



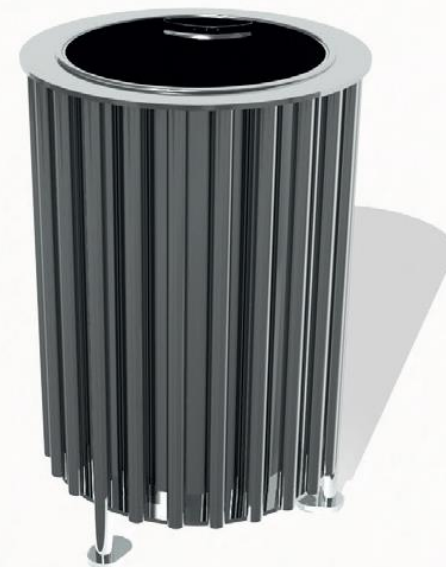
AP. 5402

DIMENSIONS | 400 x 400 x 870mm



AP. 5403

DIMENSIONS | 400 x 400 x 870mm



AP. 5404

DIMENSIONS | 400 x 400 x 600mm

SPECIFICATIONS

METAL TYPE | STAINLESS BOX PROFILE METAL PAINT | POLISHING 304 STAINLESS STEEL

LITTER BINS | METAL





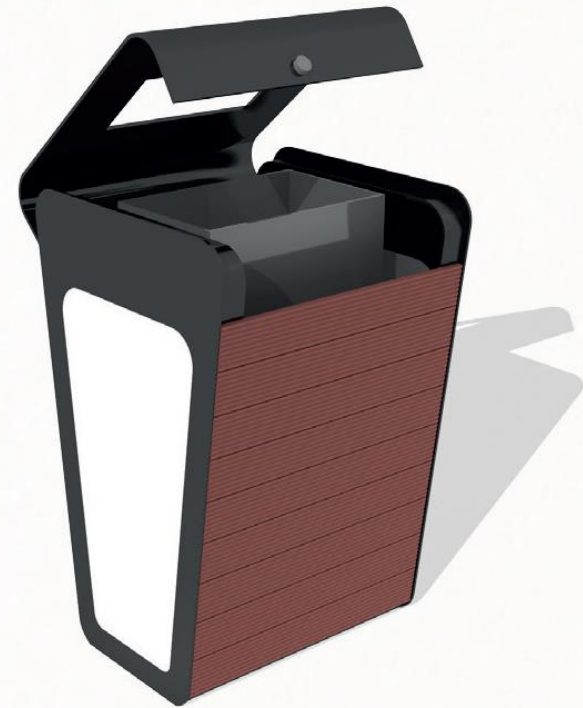
AP. 5451

DIMENSIONS | 450 x 450 x 830mm



AP. 5452

DIMENSIONS | 450 x 450 x 850mm



AP. 5453

DIMENSIONS | 500 x 500 x 800mm

SPECIFICATIONS

METAL TYPE | LAZER CUT SHEET METAL

METAL PAINT | ELECTROSTATIC PAINT

WOOD TYPE | WOOD PLASTIC COMPOSITE

LITTER BINS | METAL





AP. 5454

DIMENSIONS | 490 x 470 x 800mm



AP. 5455

DIMENSIONS | 400 x 400 x 600mm



AP. 5404

DIMENSIONS | 300 x 300 x 700mm

SPECIFICATIONS

METAL TYPE | ALUMINUM BENDED SHEET METAL PAINT | ELECTROSTATIC PAINT WOOD TYPE | IMPORTED SAPELE WOOD

LITTER BINS | METAL





AP. 5502

DIMENSIONS | 1120 x 400 x 700mm



AP. 5504

DIMENSIONS | 830 x 400 x 880mm



AP. 5505

DIMENSIONS | 500 x 450 x 750mm

SPECIFICATIONS

METAL TYPE | PIPE PROFILE & BOX PROFILE METAL PAINT | ELECTROSTATIC PAINT

LITTER BINS | METAL





AP. 5507

DIMENSIONS | 800 x 800 x 750mm



AP. 5509

DIMENSIONS | 450 x 800 x 900mm



AP. 5506

DIMENSIONS | 1000 x 600 x 550mm

SPECIFICATIONS

METAL TYPE | PIPE PROFILE & BOX PROFILE METAL PAINT | ELECTROSTATIC PAINT

LITTER BINS | METAL





AP. 5352

DIMENSIONS | 600 x 600 x 750mm

AP. 5351

DIMENSIONS | 520 x 520 x 780mm

SPECIFICATIONS

METAL TYPE | PIPE PROFILE & BOX PROFILE

METAL PAINT | ELECTROSTATIC PAINT

WOOD TYPE | CLASS IMPORTED YELLOW PINE

LITTER BINS | METAL





LITTER BINS | METAL





CORIO LITTER BIN

SPECIFICATIONS | MILD STEEL AND POWDER
COATED FINISH,
LOCKABLE DOOR ENTRY

LITTER BINS | METAL





STREETSMART LITTER BIN

SPECIFICATIONS | MILD STEEL AND POWDER
COATED FINISH,
LOCKABLE DOOR ENTRY

LITTER BINS

| METAL





OASIS LITTER BIN

SPECIFICATIONS | STAINLESS STEEL AND POWDER
COATED FINISH,
LOCKABLE DOOR ENTRY

LITTER BINS | METAL





FULCRUM LITTER BIN

SPECIFICATIONS | CAST ALUMINUM ENDS,
STAINLESS STEEL PANELS, MILL FINISH,
LOCKABLE DOOR ENTRY

LITTER BINS

METAL





ISOLA BICI PARK

MATERIALS |
GALVANIZED AND POWDER
COATED STEEL, IN DIFFERENT
RAL COLOURS
2m x 2m x 2m
3m x 2m x 2m

LITTER BINS | METAL





ISOLA MARKET

MATERIALS |
STEEL FRAME GALVANIZED AND
POWDER COATED OR HOT
GALVANIZED
2m x 2m x 2.2m

LITTER BINS | METAL





ISOLA PLAZA

MATERIALS |
STEEL FRAME GALVANIZED AND PAINTED
AND WOODEN SLATS
1.5M LENGTH EVERY PANEL

LITTER BINS | METAL





ISOLA OASI

MATERIALS |

**PANLES AND PILLARS MADE OF PINE, SUITED
TO DECORATE AND DELINEATE THE AREA OF
CONTAINERS**

3m x 1.5m x 2m

4.5m x 1.5m x 2m

LITTER BINS |

METAL





LITTER BINS | CONCRETE





MARTE LITTER BIN

SPECIFICATIONS | CEMENT AND INERT RIVER WASHED,
ROBUST STEEL FRAME, METAL PART GALVANIZED &
POWDER COATED
700mm x 450mm x 750mm

LITTER BINS | CONCRETE





340 LITTER BIN WITH ASHTRAY

SPECIFICATIONS | CRUSHED
WHITE MACAEL MARBLE,
Ø415 x 900mm,
Weight 133kg



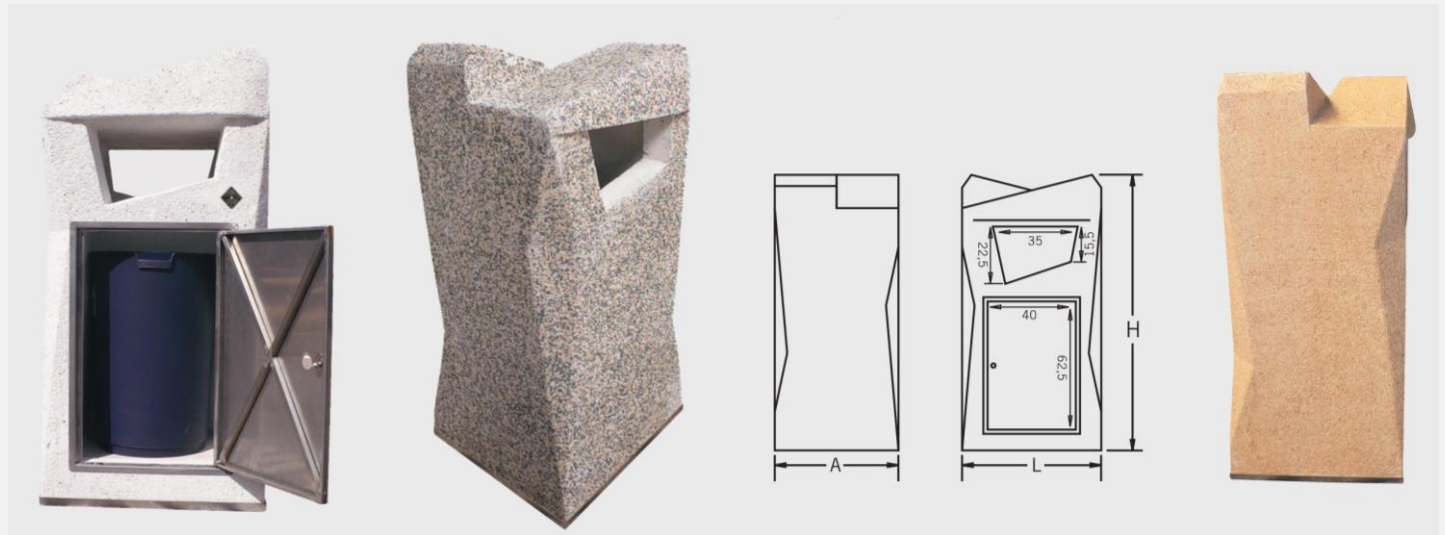
341 LITTER BIN

SPECIFICATIONS | CRUSHED
WHITE MACAEL MARBLE,
Ø415 x 1140mm,
Weight 135kg

LITTER BINS

CONCRETE





PAPELERA “MNL” LITTER BIN

SPECIFICATIONS | CRUSHED WHITE MACAEL MARBLE, NATURAL
RAW MATERIALS
600mm x 550mm x 1220mm,
WEIGHT 408kg.

LITTER BINS | CONCRETE





LITTER BINS | WOODEN



ABU DHABI LITTER BIN

SPECIFICATIONS | GALVANIZED AND POWDER
COATED,
625mm x 586mm x 1100mm

LITTER BINS | METAL





BASKET WOOD LITTER BIN

SPECIFICATIONS | STEEL
SHEETS COVERED WITH
PINE WOODEN SLATS,
DIFFERENT RAL COLORS
Ø483 x 1000mm



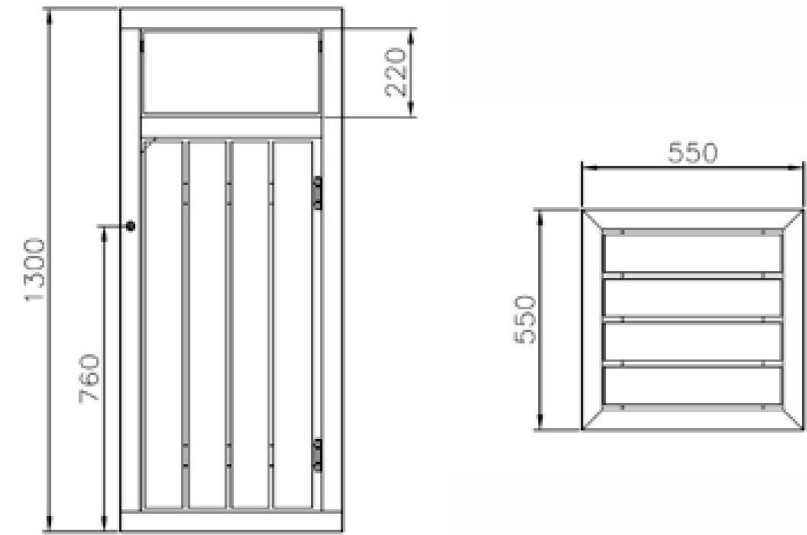
CAMPING LITTER BIN

SPECIFICATIONS | PINE
WOODEN SLATS, STEEL TUBE
SUPPORT
Ø333 x 1200mm,

LITTER BINS |

WOODEN





FRANCISCO LITTER BIN

SPECIFICATIONS | SQUARE SHAPE MADE OF A FRAME IN SQUARE TUBE 50x50mm AND COVERED WITH WOODEN SLATS 95x20mm. LITTER BIN HAS BASE PLATE WITH HOLES FOR THE FIXING OF THE STRUCTURE TO THE GROUND WITH BOLTS. WALL METAL PARTS ARE GALVANIZED AND POWDER COATED IN DIFFERENT RAL COLOUR. ALL SCREWS ARE IN STAINLESS STEEL.

LITTER BINS

METAL





AVENUE LITTER BIN

SPECIFICATIONS | HARDWOOD TIMBER SLATS, MILD
STAINLESS STEEL AND POWDER COATED FINISH,
LOCKABLE DOOR ENTRY

LITTER BINS

| WOODEN





WOODGROVE LITTER BIN

SPECIFICATIONS | HARDWOOD TIMBER SLATS, MILD STEEL, HOT DIPPED GALVANIZED, LOCKABLE DOOR ENTRY

LITTER BINS

WOODEN





ROADSIDE LITTER BIN

SPECIFICATIONS | HARDWOOD TIMBER SLATS, MILD STAINLESS STEEL AND POWDER COATED FINISH, LASER CUT LOGO AND TEXT

LITTER BINS | WOODEN





LITTER BINS

METAL | CONCRETE | WOODEN

PO Box 128619 Abu Dhabi UAE | Tel +971 2 650 8039 | Fax +971 2 673 5995

Email moderngardens@gmail.com | marketing.moderngardens@gmail.com | Website moderngardensuae.com