



ANCHORING SYSTEMS

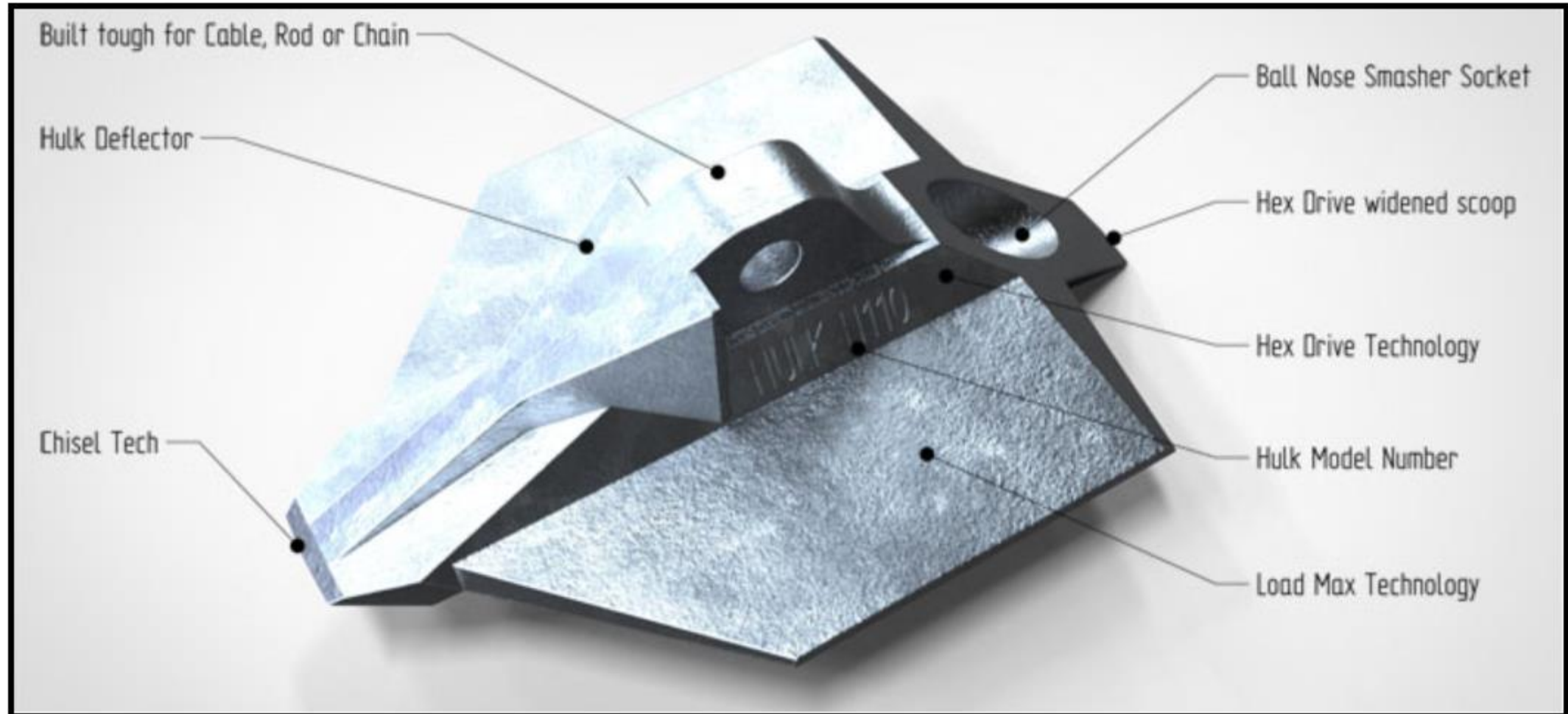
MODERN GARDENS FOR GARDENS EQUIPMENT TRADING LLC

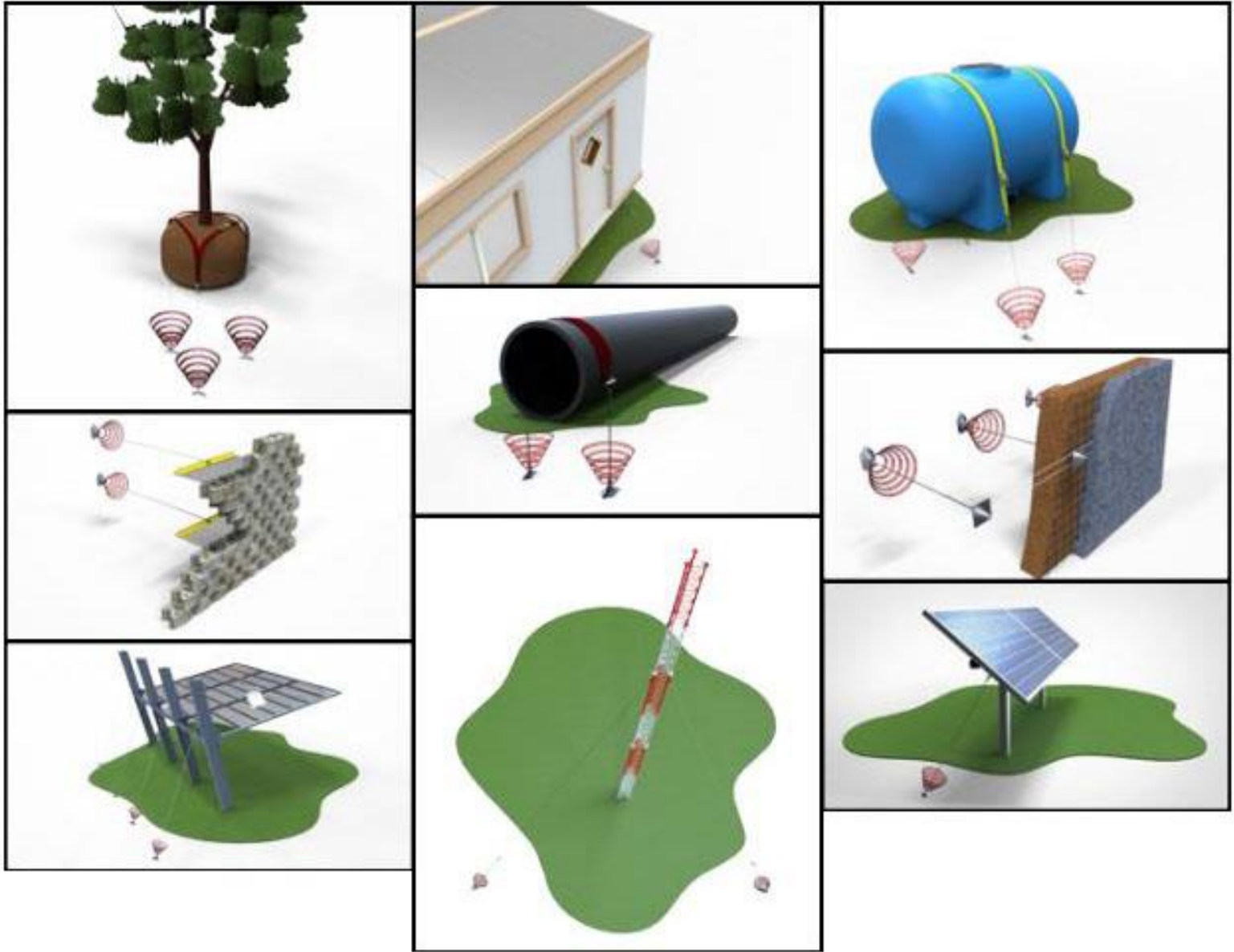
PO Box 128619 Abu Dhabi UAE | Tel +971 2 650 8039 | Fax +971 2 673 5995
Email moderngardens@gmail.com | marketing.moderngardens@gmail.com

P.O Box No. 11169 Manama, Kingdom of Bahrain
Mobile +973 66628877 | Email bahrain.moderngardens@gmail.com

Website moderngardensuae.com

THE ANATOMY OF AN ANCHOR





APPLICATIONS

Anchoring Systems are used worldwide to secure items that can be stolen, moved, or blown down. Anchors are intended for light duty applications in normal soils.

For highly corrosive environment, anchoring can be fabricated with stainless steel wire rope, plastic impregnated wire rope or other corrosion-resistant solutions.

Ideal for:

- Tree Support
- Fences
- Structures
- Tents
- Towers
- Scaffolding
- Tree Retentions
- Turf Reinforcement
- Sheds
- Theft Deterrent
- Vineyards
- And more..

- No digging - No excavation -- No soil Disturbance
- Anchors can be load tested during installation to exact holding capacity requirements.
- Fast installation with conventional hydraulics, pneumatic equipment available worldwide.
- Easily installed in tight, hard-to-reach locations.
- Substantial time and cost savings.

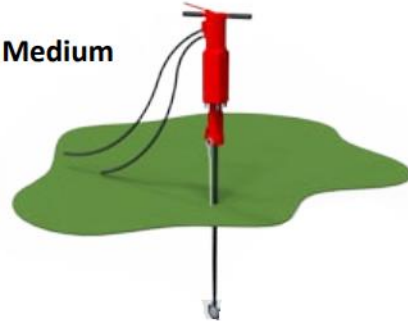


HULK INSTALLATION METHODS

Light



Medium

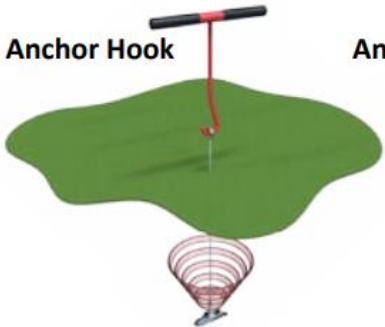


Heavy



ANCHOR LOCKING AND PROOF TESTING

Anchor Hook



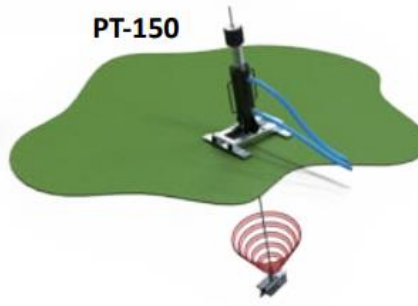
Anchor Jack



PT-45



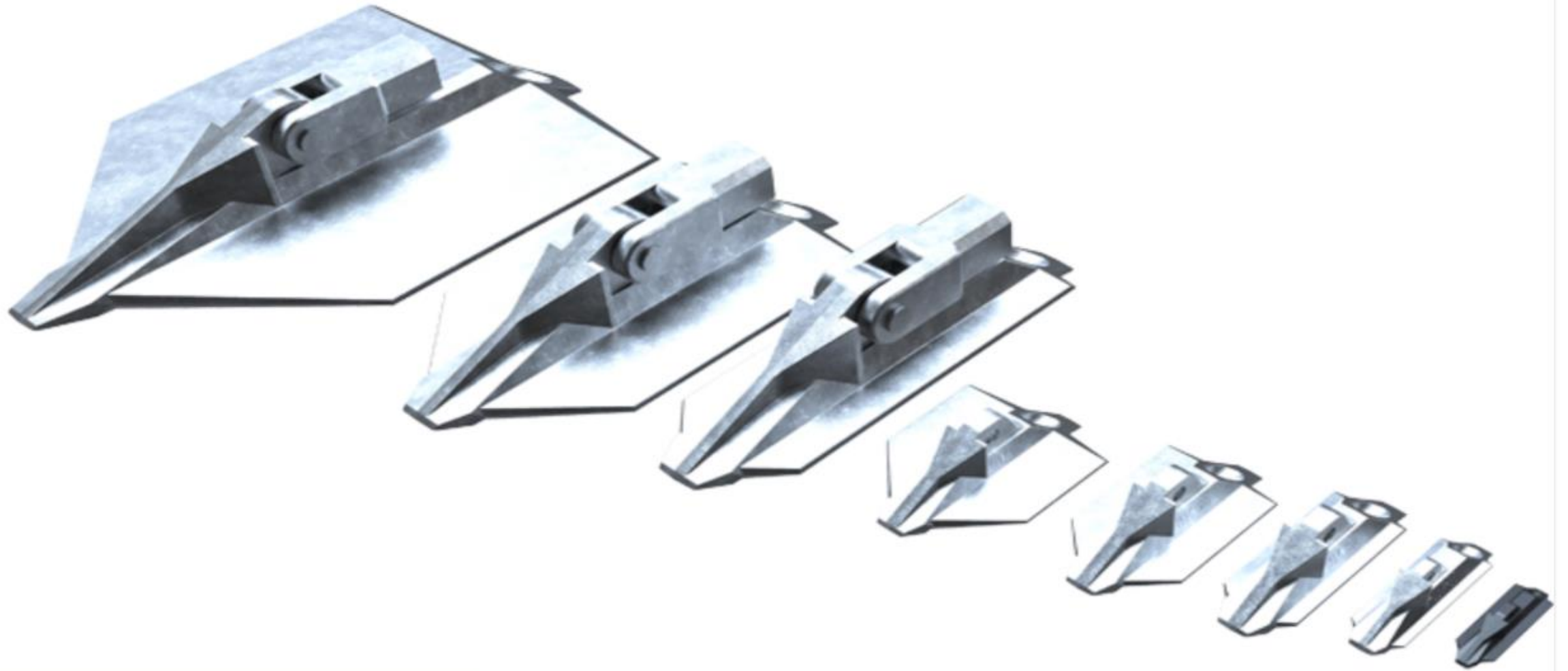
PT-150



HOW IT WORKS

1. Drive anchor into the soil using a hammer and drive steel rod (a small jack hammer can also be used with power drive steel).
2. Once anchor is at the proper depth, remove the wire rope.
3. Set the anchor in the soil by pulling up on the wire rope.





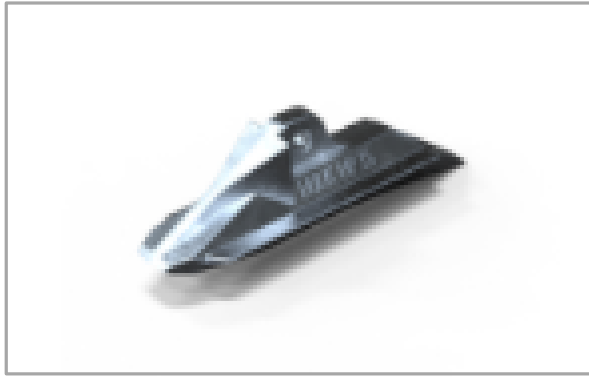
| ANCHORS



HULK HP25

DIMENSIONS |
WEIGHT: 0.028KG
LENGTH: 85mm

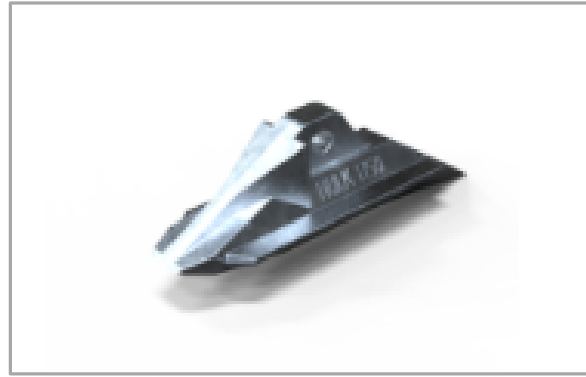
HEIGHT: 25mm
WIDTH: 25mm



HULK HP35

DIMENSIONS |
WEIGHT: 0.28KG
LENGTH: 125mm

HEIGHT: 44mm
WIDTH: 35mm



HULK H50

DIMENSIONS |
WEIGHT: 0.75KG
LENGTH: 160mm

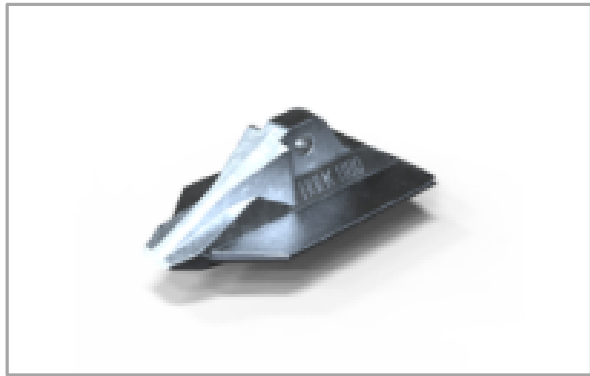
HEIGHT: 63mm
WIDTH: 50mm



HULK HG180

DIMENSIONS |
WEIGHT: 0.64KG
LENGTH: 341mm

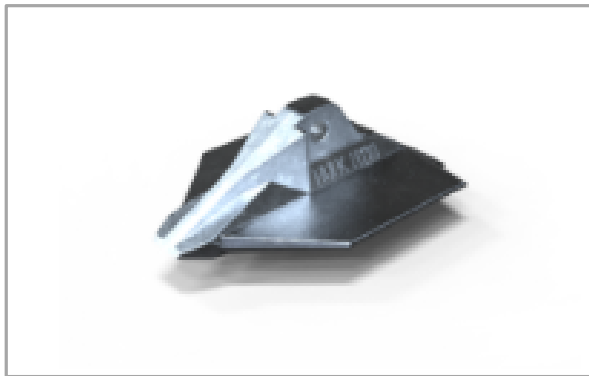
HEIGHT: 105mm
WIDTH: 180mm



HULK H80

DIMENSIONS |
WEIGHT: 0.83KG
LENGTH: 160mm

HEIGHT: 63mm
WIDTH: 80mm



HULK H110

DIMENSIONS |
WEIGHT: 0.99KG
LENGTH: 160mm

HEIGHT: 63mm
WIDTH: 110mm



HULK HG100

DIMENSIONS |
WEIGHT: 5.25KG
LENGTH: 341mm

HEIGHT: 105mm
WIDTH: 341mm



HULK HG320

DIMENSIONS |
WEIGHT: 11.3KG
LENGTH: 444mm

HEIGHT: 111mm
WIDTH: 320mm



| SCREW ANCHORS



SCREW ANCHORS

THESE ANCHORS CAN BE INSTALLED TO A DEPTH OF 4M WITH EITHER A BOOM SUSPENDED TORQUE MOTOR LINE TRUCK OR RACK TYPE DIGGER TRUCK.

THE ROD IS SELECTED FOR THE GUY LOAD AND INSTALLED DEPTH AND EYE NUT IS SELECTED FOR THE NUMBER OF GUYS. THE TORQUE REQUIRED TO INSTALL THE ANCHOR WILL DETERMINE THE ANCHOR HUB RATING.

THE NOMINAL SIZES FOR OF THE ANCHOR RODS ARE 16MM, 20MM AND 24MM FOR 72KN, 102KN AND 160KN ULTIMATE TENSION RESPECTIVELY. ANCHOR ROD LENGTHS ARE 1.1M AND 2.1M. THE ENDS OF THE 20MM DIAMETER ROD ARE UPSET AND HAVE THE SAME THREAD AS THE 24MM ROD. A TYPICAL INSTALLATION IS WITH ONE 2.1M LENGTH OF ROD.

EYE NUTS ARE DESIGNATED WITH AN “S”, “D” OR “T” FOR ATTACHING ONE, TWO, OR THREE GUYS, RESPECTIVELY.

STANDARD HEAVY DUTY INTERNAL DRIVE ANCHORS (SOCKET TYPE)

SIZES:

- 200MM X 90MM PITCH
- 250MM X 90MM PITCH
- 350MM X 90MM PITCH

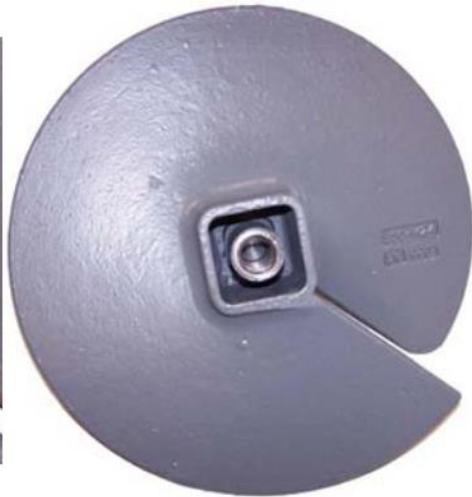
90MM PITCH HEAVY DUTY SCREW ANCHORS DESIGNS ARE RATED FOR 10,000 FT.LBS (14 KNM) TORQUE AND THE THREAD IS RATED AT 144KN IN KEEPING WITH THE RATING FOR M24 THIMBLE EYE NUTS. HOWEVER, OUR THREADS USUALLY TAKE WELL OVER 200KN.

SPECIAL PURPOSE LIGHT DUTY INTERNAL DRIVE ANCHORS (SOCKET TYPE)

THESE HAVE 16MM THREADS AND THEY HAVE NOT BEEN RATED.

SIZES:

- 200MM X 70MM PITCH
- 250MM X 70MM PITCH





| ANCHOR RODS & ACCESSORIES

ANCHOR RODS AND ACCESSORIES

ANCHORING ROPE AND RIGGINGS' ANCHOR RODS ARE MANUFACTURED ACCORDING TO INTERNATIONAL SPECIFICATIONS AND ARE MADE FROM GRADED MILD STEEL. GALVANISED TO AUSTRALIAN SPECIFICATIONS, THEY ARE OFFSET ON EACH END WITH A HEX FOR EASY ASSEMBLY AND DURING INSTALLATION RE-TENSIONING.

FEATURES:

- USED WITH SOCKET DRIVE SCREW ANCHORS
- USED WITH ANCHOR SYSTEMS



16MM SCREW ANCHOR ROD - 72KN ULTIMATE TENSILE STRENGTH

Code	Length	Weight
HLKGAR-16E	1000mm	1.6kg
HLKGAR-16	2100mm	3.3kg

20MM SCREW ANCHOR ROD - 102KN ULTIMATE TENSILE STRENGTH

Code	Length	Weight
HLKGAR-20E	1100mm	2.27kg
HLKGAR-20	2100mm	4.22kg

24MM SCREW ANCHOR ROD - 160KN ULTIMATE TENSILE STRENGTH

Code	Length	Weight
HLKGAR-24E	1100mm	4.36kg
HLKGAR-24	2100mm	7kg



16MM THIMBLE GROOVE EYE NUT - 72KN ULTIMATE TENSILE STRENGTH

Code	Type	Weight
HLKTGEN-16S	Single groove	0.45kg
HLKTGEN-16D	Double Groove	0.81kg
HLKTGEN-16T	Triple groove	1.0kg

20MM AND 24MM THIMBLE GROOVE EYE NUT - 160KN ULTIMATE TENSILE STRENGTH

Code	Type	Weight
HLKTGEN-24S	Single groove	0.86kg
HLKTGEN-24D	Double Groove	0.81kg
HLKTGEN-24T	Triple groove	1.0kg



COUPLERS - USED TO JOIN ADDITIONAL RODS WHEN REQUIRED FOR 16MM DIAMETER ROD- 72KN ULTIMATE TENSILE STRENGTH

Code	Weight
HLKGARC-16	0.22kg

FOR 20MM AND 24MM DIAMETER ROD- 160KN ULTIMATE TENSILE STRENGTH

Code	Weight
HLKGARC-20	0.22kg
HLKGARC-24	0.22kg



| FASTENING PINS & STAPLES



STAPLES ARE OUR MOST ECONOMICAL SECURING SYSTEM. THE 100MM AND 150MM SIZES ARE SUITABLE FOR MOST EROSION CONTROL BLANKETS (ECB). TURF REINFORCEMENT MATS (TRM) GENERALLY REQUIRE THE 200MM OR 250MM SIZES.

20MM AND 24MM THIMBLE GROOVE EYE NUT - 160KN ULTIMATE TENSILE STRENGTH

Code	Description	Packaging	Weight
HLKSTP410310	4mm dia 100mm x 30mm x 100mm Wire Staples	500/box	11.5kg
HLKSTP415315	4mm dia 150mm x 30mm x 150mm Wire Staples	300/box	9.90kg
HLKSTP420320	4mm dia 200mm x 30mm x 200mm Wire Staples	250/box	10.75kg
HLKSTP430530	4mm dia 300mm x 50mm x 300mm Wire Staples	150/box	14.5kg

FASTENING PINS & STAPLES

A WIDE ASSORTMENT OF STAPLES AND PINS SECURE ANYTHING FROM GEOTEXTILES AND ROLLED EROSION CONTROL PRODUCTS TO WEED MATS AND ARTIFICIAL TURFS. WITH VARYING MATERIALS, APPLICATIONS AND SITE CONDITIONS, IT IS IMPORTANT TO HAVE THE CORRECT FIXING.

STAPLES ARE IDEAL FOR FIXING ARTIFICIAL GRASS, GEOTEXTILE MEMBRANES OR WEED CONTROL FABRICS. SOLD IN A VARIETY OF PACK SIZES OUR PINS ARE THE IDEAL STAPLE FOR YOUR AGRICULTURAL, LANDSCAPING AND EROSION CONTROL PROJECTS.

STAPLES ARE USED FOR FIXING:

- GEOTEXTILES
- WEED CONTROL FABRIC
- GRASS MESH
- EROSION CONTROL MATS
- IRRIGATION TUBING

GEOTEXTILE FABRIC PINS

FABRIC PINS ARE VERY HANDY TO HOLD GEOTEXTILES IN PLACE DURING INSTALLATIONS. THEY CAN ALSO BE USED TO SECURE TRMS IN SOME SOFT, LOOSE SOILS. MADE OF STEEL THEY DRIVE EASILY INTO MOST SOILS. A WASHER OR CIRCULAR RING PREVENTS THE MATERIAL FROM PULLING THROUGH. AVAILABLE IN 300MM AND 450MM.



ANCHORING SYSTEMS

MODERN GARDENS FOR GARDENS EQUIPMENT TRADING LLC

PO Box 128619 Abu Dhabi UAE | Tel +971 2 650 8039 | Fax +971 2 673 5995
Email moderngardens@gmail.com | marketing.moderngardens@gmail.com

P.O Box No. 11169 Manama, Kingdom of Bahrain
Mobile +973 66628877 | Email bahrain.moderngardens@gmail.com

Website moderngardensuae.com